

## The step Calibrate program phoenix

After, do installation program already then begin calibrate.

Step calibrate follow a picture

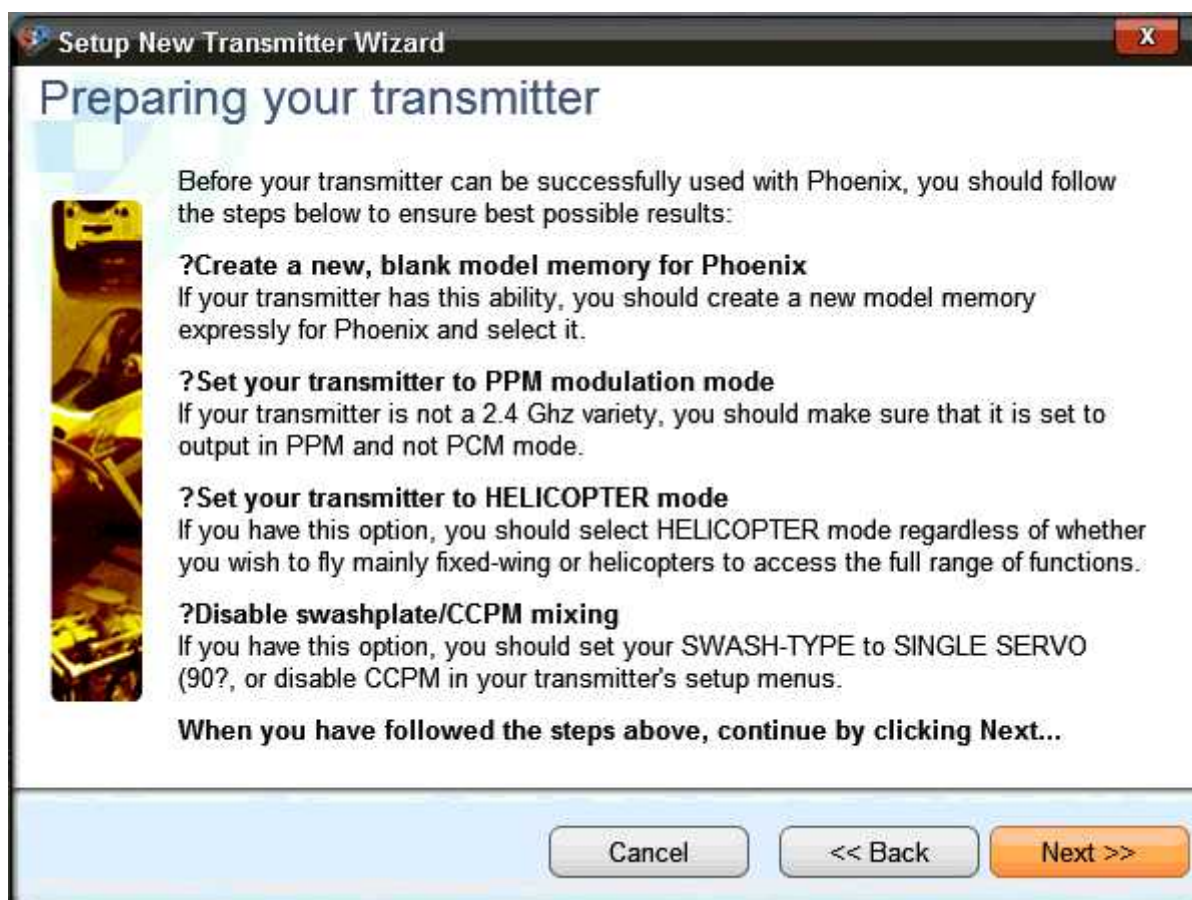
1. Before, calibrate give open and move a button goes to at phoenix and begin press at system and choose set up new transmitter.



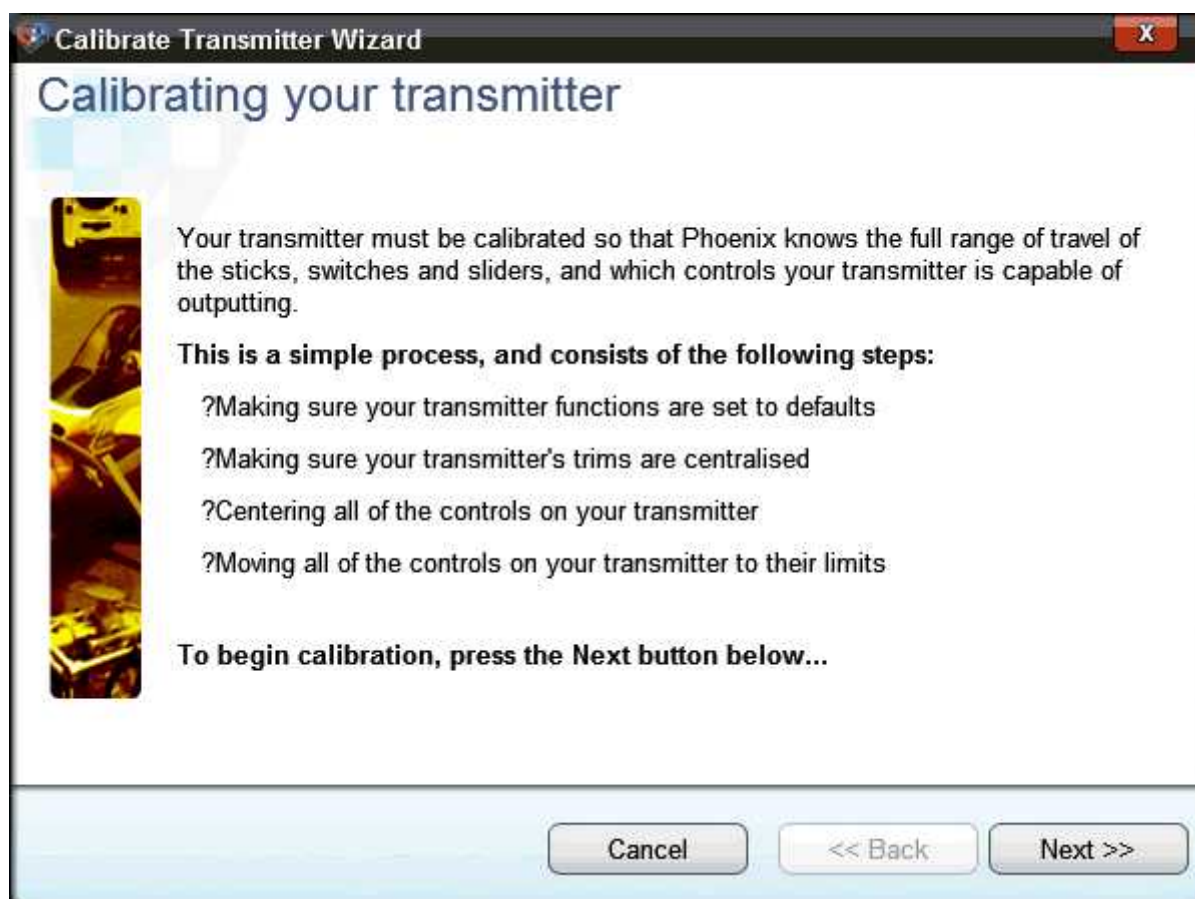
2. After, press chooses set up new transmitter press next follow a picture.



3. Press next follows a picture.




4. Press next follows a picture.



5. Press next follows a picture.

Calibrate Transmitter Wizard

## Calibrating your transmitter



**Making sure that your transmitter's functions are set to their default positions.**

To ensure correct calibration, all of your transmitter's switches should be set to their default, OFF/IDLE positions.

**Please note that this includes any built-in rate switches, idle-up switches or throttle-hold switches.**

When you have done so, continue by clicking Next...


Cancel << Back Next >>

6. Move the lever transmitter go to around follow as a picture.

Calibrate Transmitter Wizard

## Centre all controls

Phoenix needs to know the central positions of all controls on your transmitter.



When you have done so, continue by clicking Next...

Cancel << Back Next >>



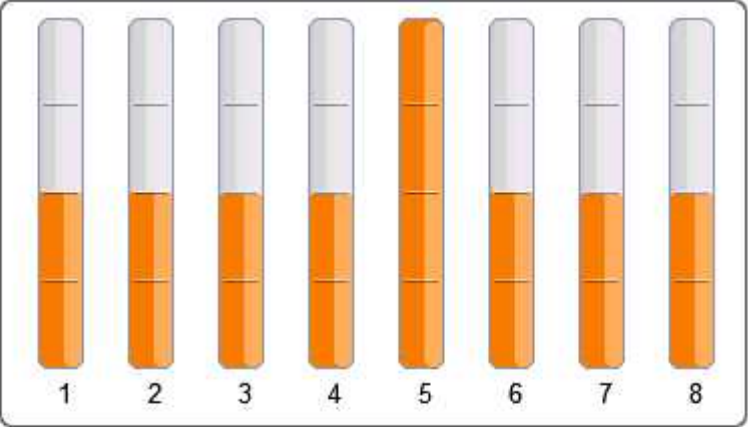


7. Move type lever slowly, follow a picture is a circle, move go up and move down from that time press next follow a picture.

**Calibrate Transmitter Wizard** X

## Move all sticks to extents

Phoenix now needs to know the extents of the sticks on your transmitter.

Please move both sticks in a complete slow circle, making sure all four corners of the extents of motion are touched.



1 2 3 4 5 6 7 8

When you have done so, continue by clicking **Next...**

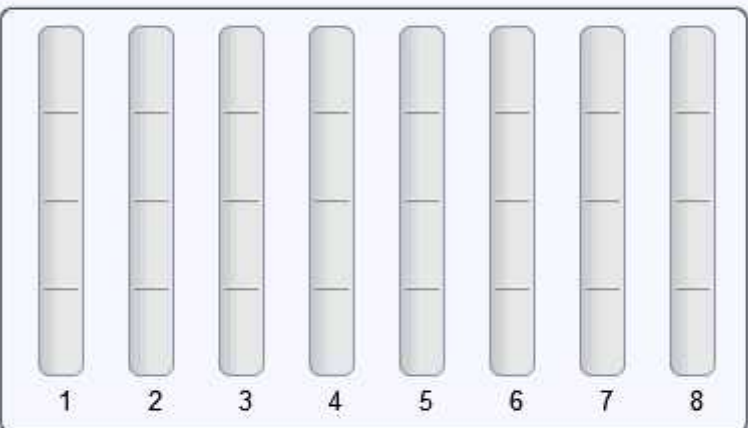


8. Move type lever slowly, follow a picture is a circle, move go up and move down from that time press next follow a picture.

**Calibrate Transmitter Wizard** X

## Move all sticks to extents

Phoenix now needs to know the extents of the sticks on your transmitter.

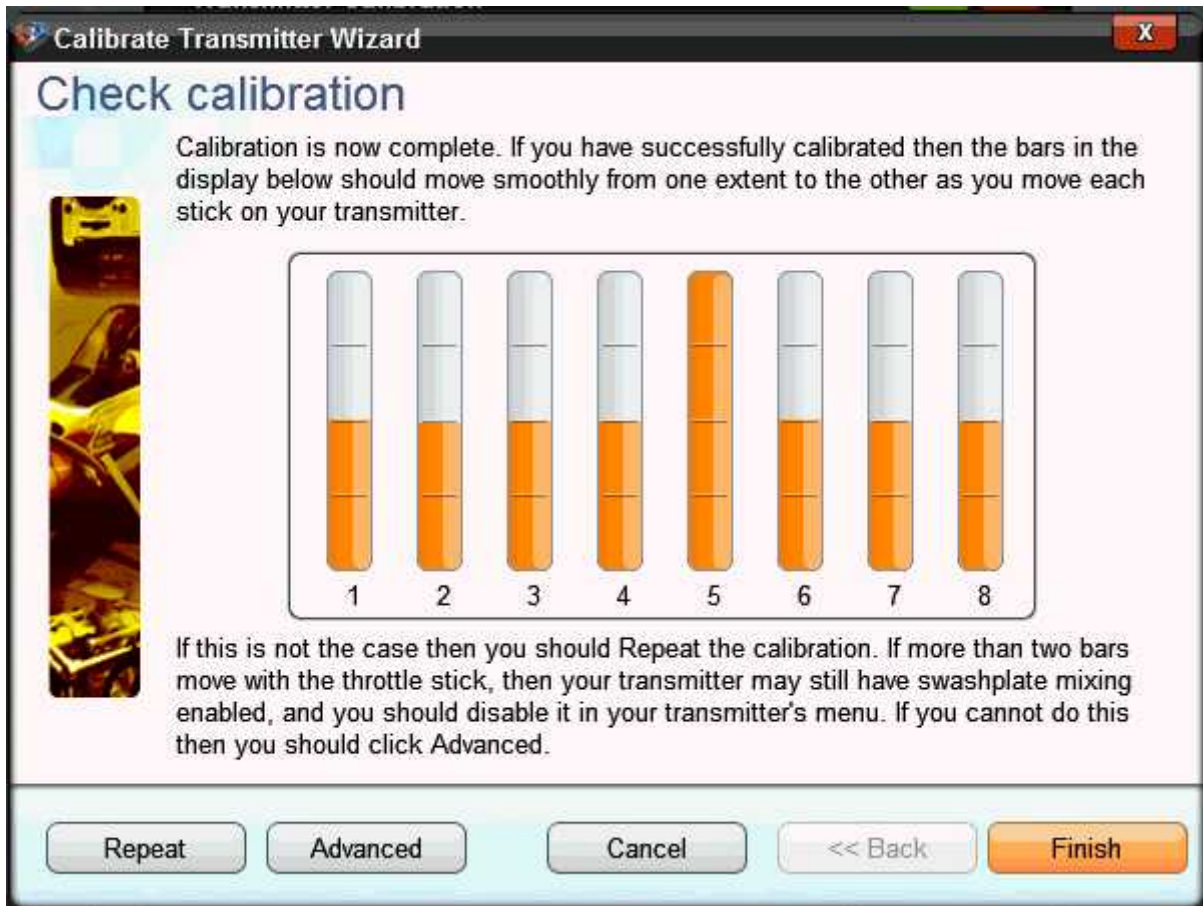
Please move both sticks in a complete slow circle, making sure all four corners of the extents of motion are touched.



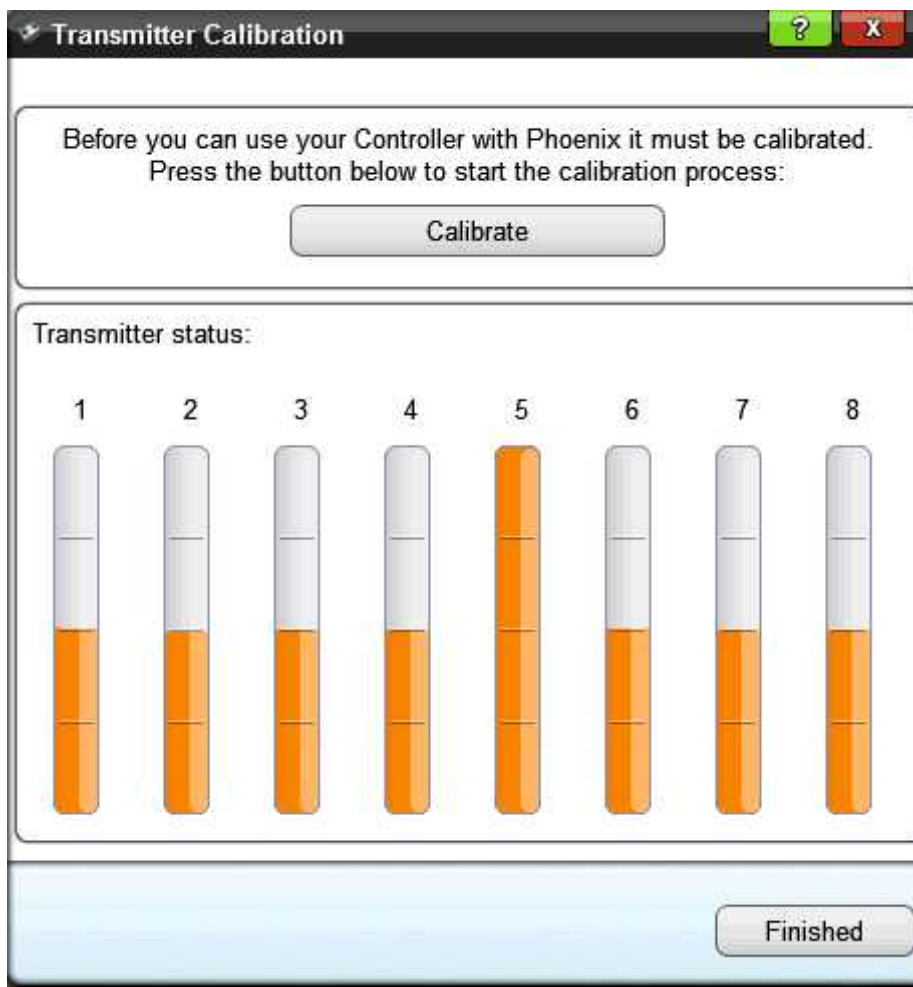
1 2 3 4 5 6 7 8

When you have done so, continue by clicking **Next...**

9. Press Finish, follow a picture.

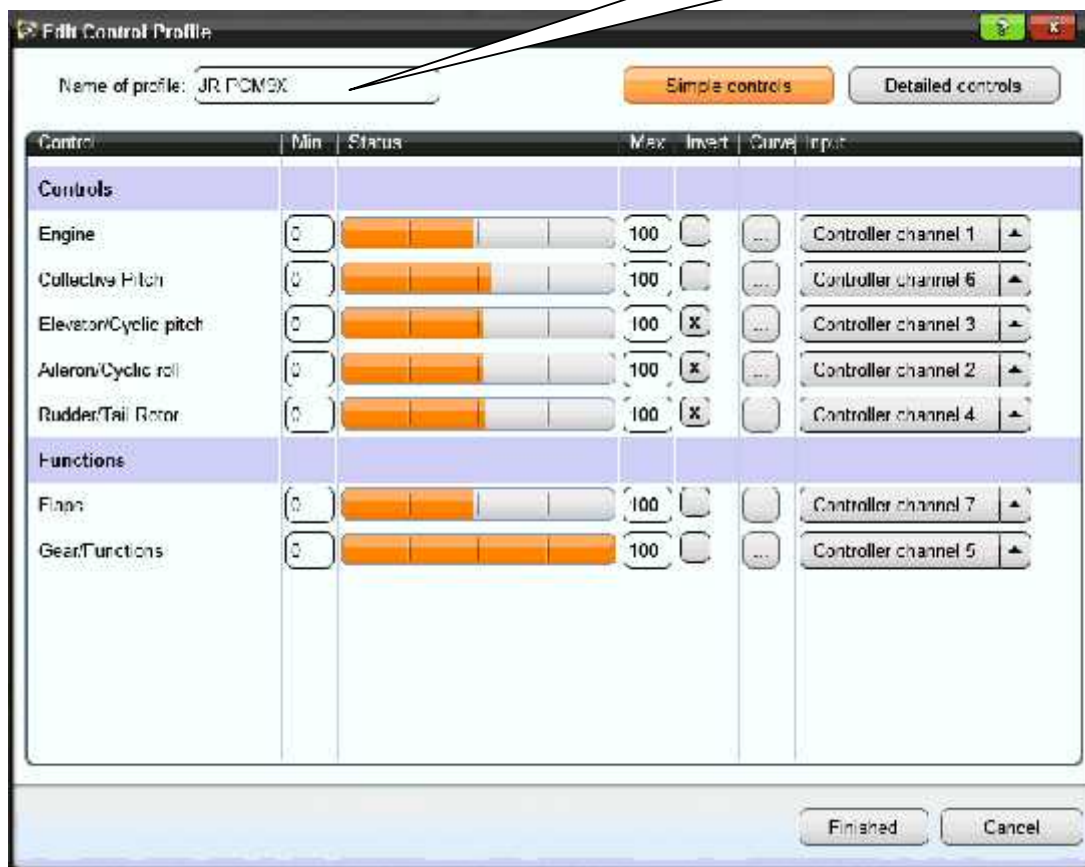


10. Calibrate complete follow the picture.

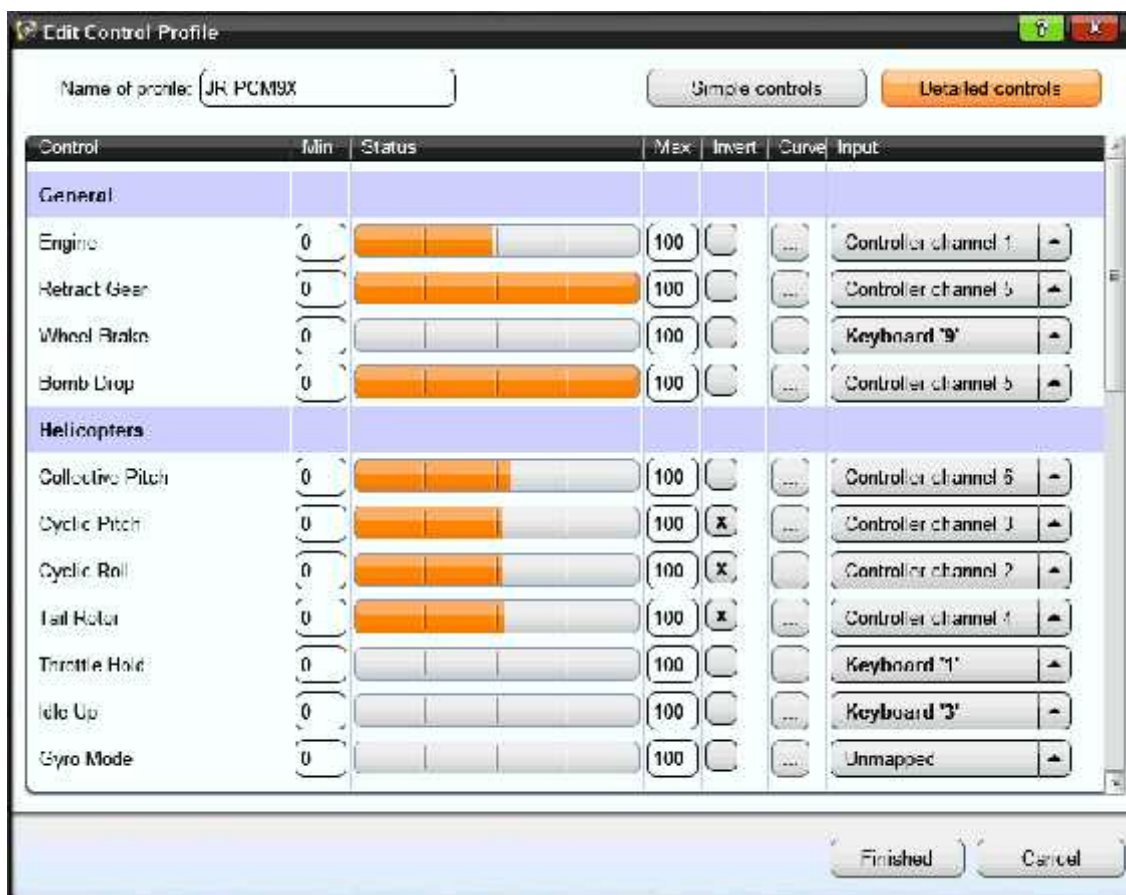


- Press at your control and choose edit a picture will appear, a picture show choose simple controls.

The name of transmitter



- Press at Detailed controls a picture will appear as a picture show.



13. A program fully play

