



Step Calibrate Flight Simulator 6 CH

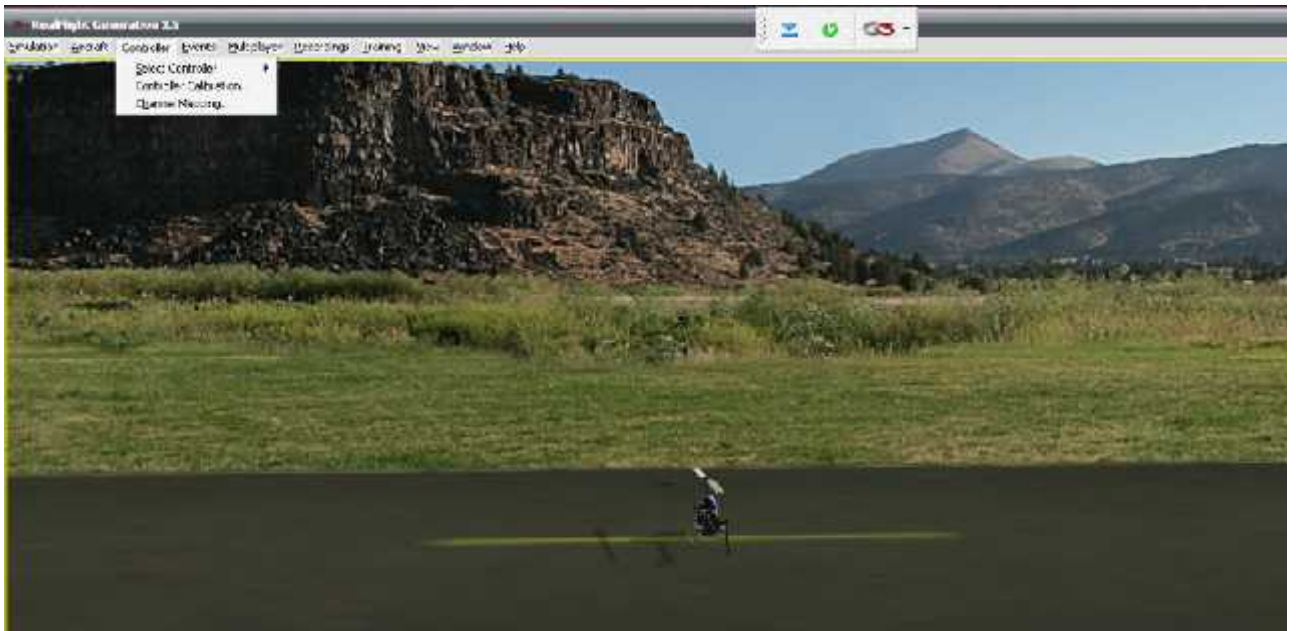
1. After set up a program Real Flight be finished insert USB Simulator and turn on simulator fine a button chooses to go to G3-G4.5 and fine button trim give middle bang.
2. Press Run Program Real Flight (follows a picture)



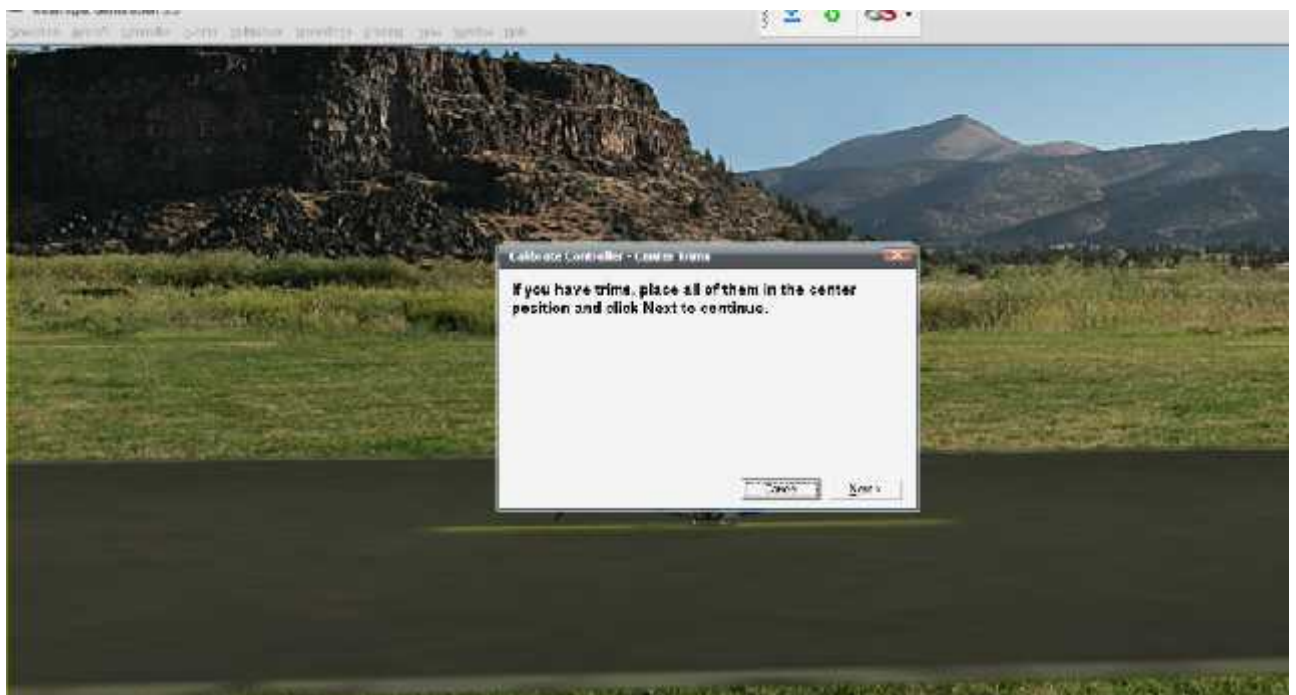
3. choose a program controller (follows a picture)

3.1 choose , select controller

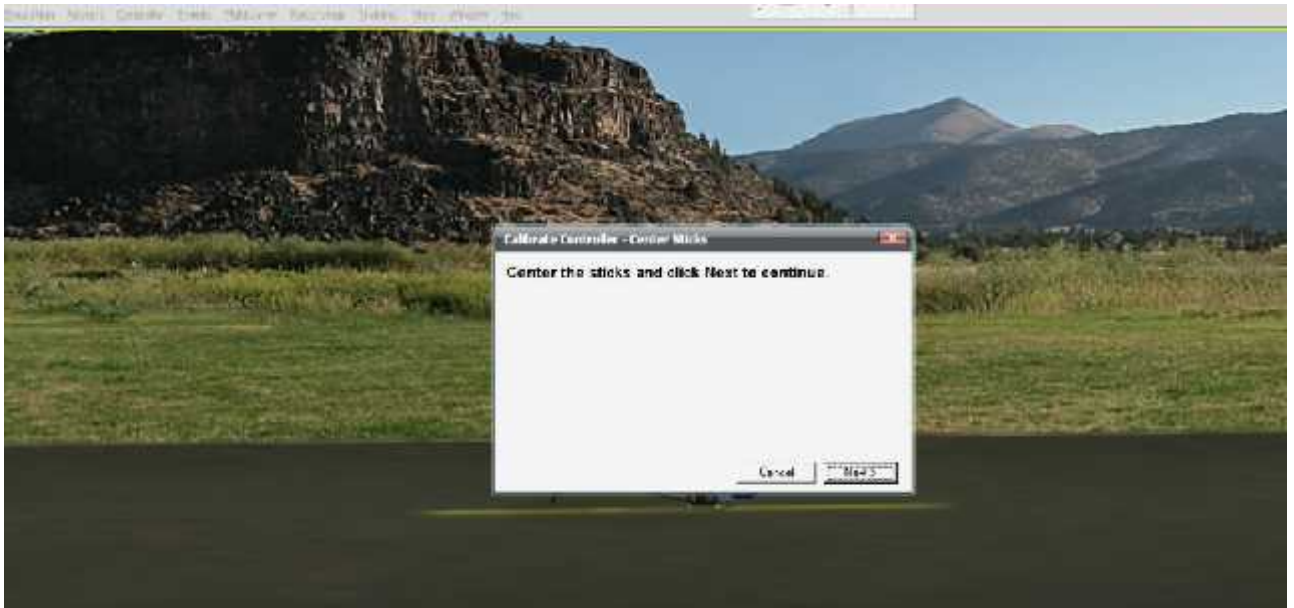
3.2 choose , Inter Link Joystick



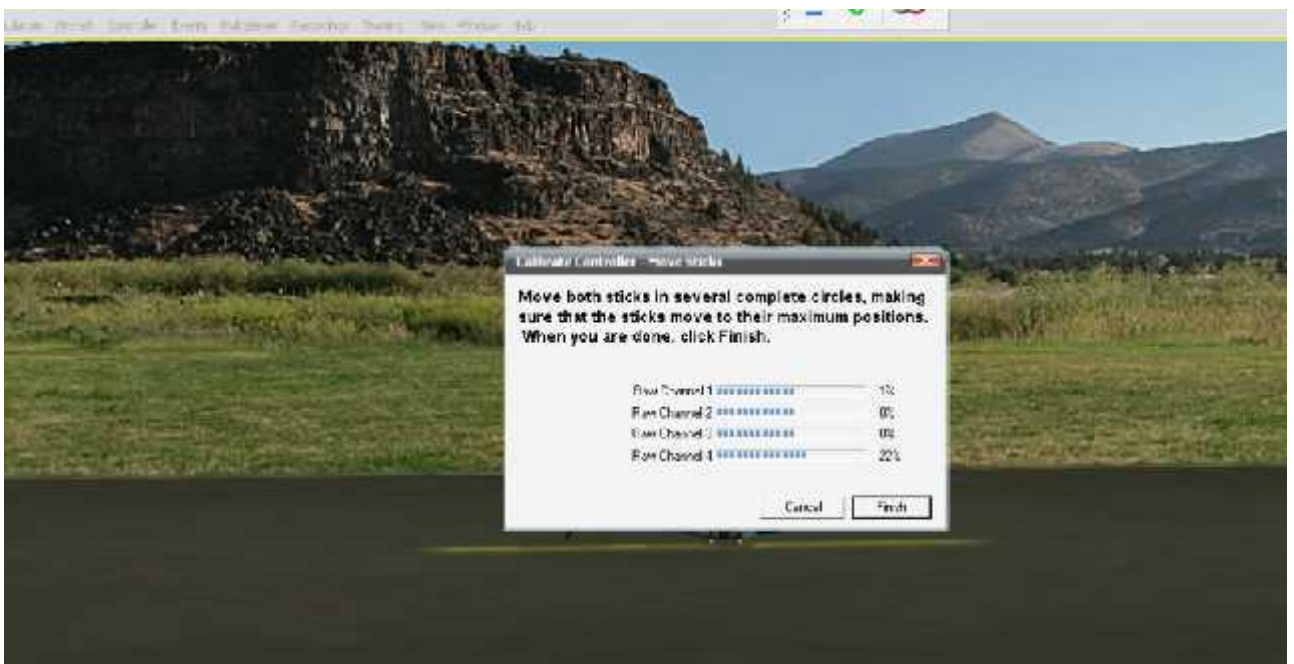
4. Enter at Controller again for choose Controller Calibration as show a picture after press controller calibration and press next follow a picture. Follows a picture



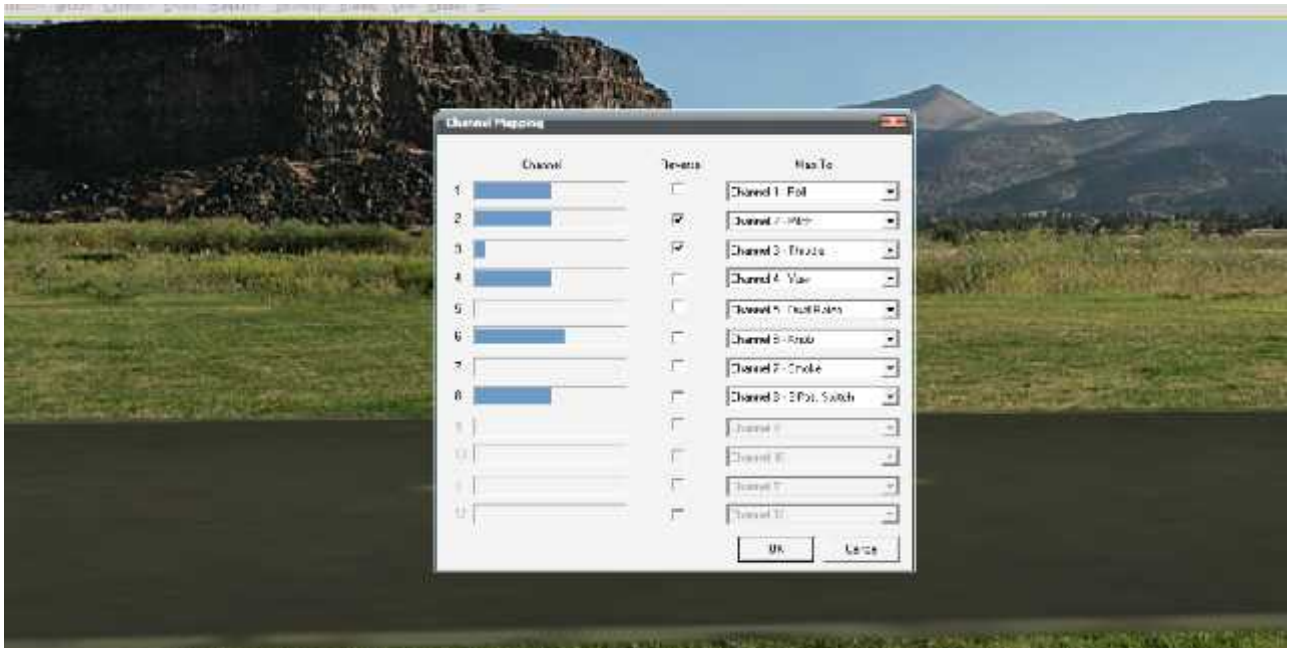
4.1 Press next follows a picture.



5. Turn the lever back and forth in a circle for program get to know with Simulator , about 2-3 round ,when the value is showing that run on the strip zone (The blue) be valuable stable 0 at least 3 the strip zone on then press finish as picture.

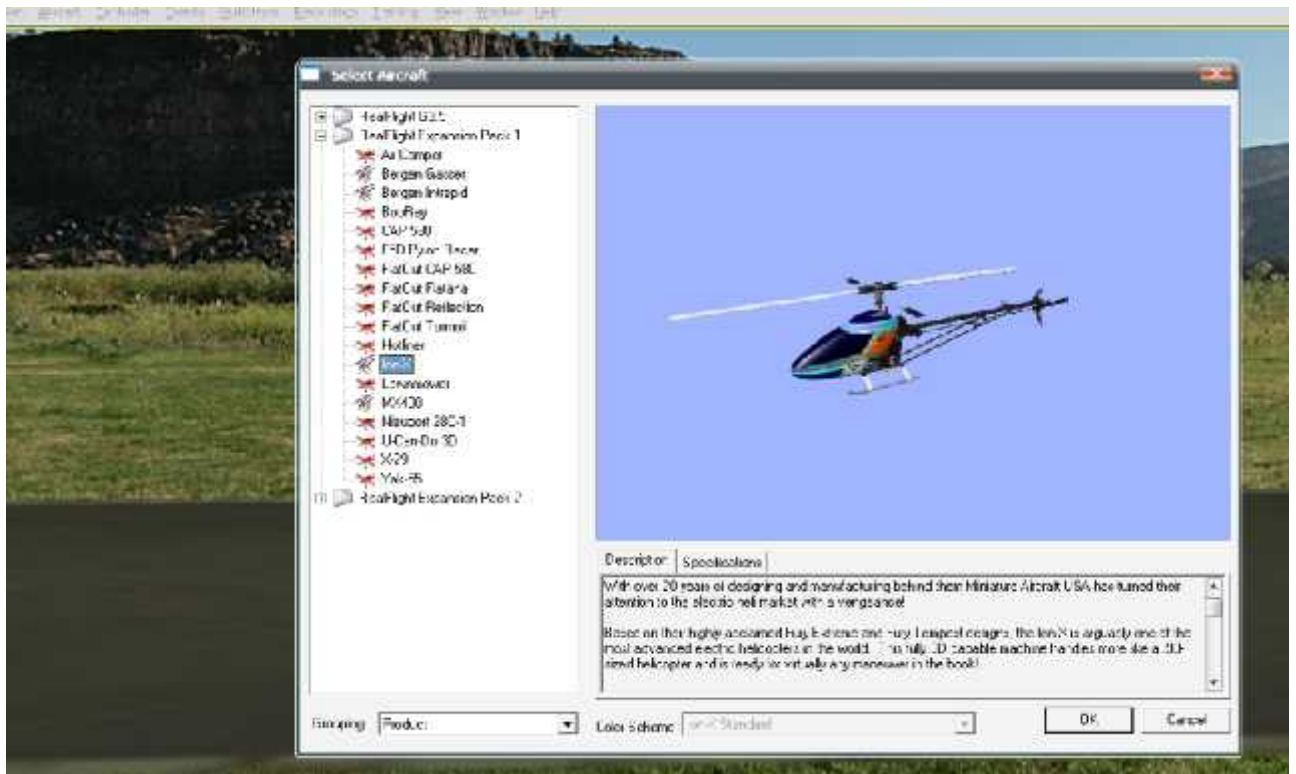


6. Enter at Controller again and choose Channel Mapping for press chooses at the channel Reverse that want Channel where thereafter press OK (follows a picture).



7. Press choose Aircraft and then choose Select Aircraft which have like model and a kind of an airplane choose to play various kinds from that time when choose finished as a result give press OK, as a picture show.





8. the suggestion adds in a program can choose the place, weather get with by enter choose at Simulation and choose Select Airport or weather (sun, wind) and if want to play new press Space Bar for playing new plane again and at some point an airplane reverse the channel stays us can correct by entering at channel mapping choose the channel reverse , and tick the channel reverse want to take it or if do not want to take tick go out.