



USB RC Flight simulator Instruction Manual



Minimum system requirements:

100% Pentium III or AMD Athlon/64 compatible processor with at least 800Mhz
128MB RAM
1GB free hard disc memory
CD-ROM drive
Open GL compatible graphic card with at least 64MB
100% DirectX compatible sound card
Windows ME / 2000 / XP with DirectX version 9.0b or higher
A free USB port and a trainer output on your transmitter

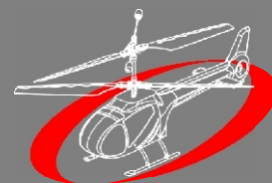
Recommended system requirements:

100% Pentium IV or AMD 64 compatible processor with at least 1600Mhz
256MB RAM
CD-ROM drive
OpenGL compatible graphic card with at least 128MB

Please note: On a system with only minimum system requirements, the performance strongly depends on the currently loaded model and scenery.

Download FMS software:

www.dynam-rc.com/information/download.htm

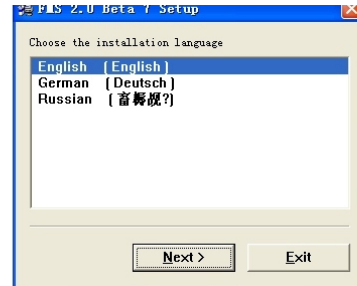


Install FMS software

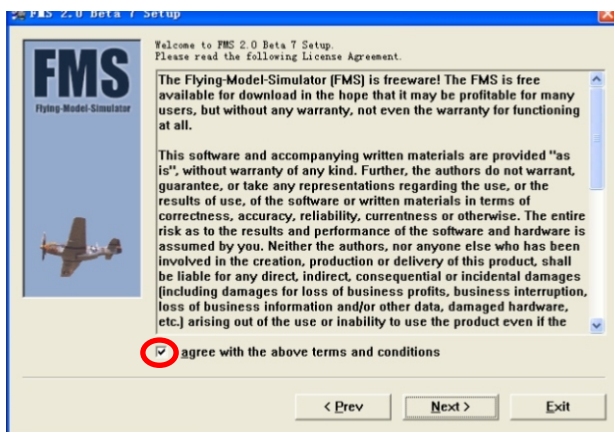
1. Get the FMS software in the CD or internet, double-click the FMS installation software, and begin to install the software.



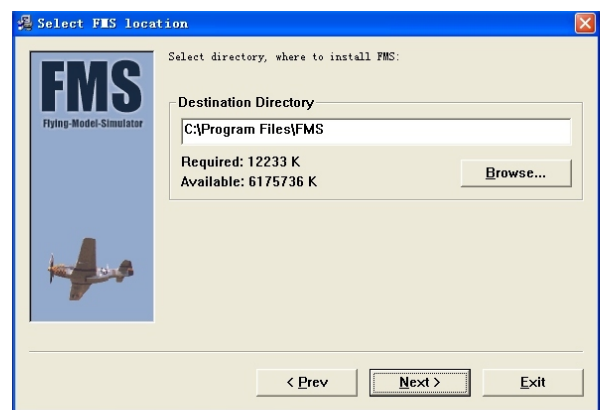
2. Choose your language and click "Next" to continue.



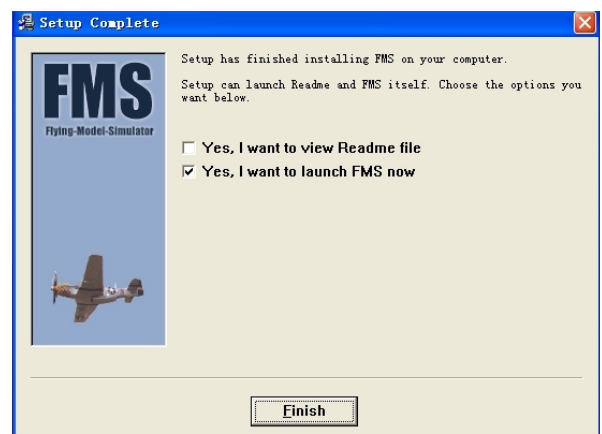
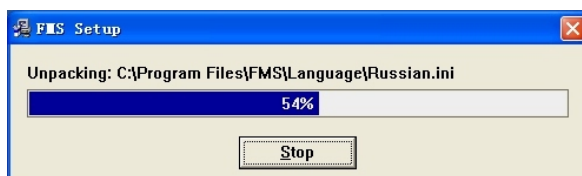
3. Read the conditions and make a check to agree. Click "Next" to continue.



4. Choose a drive where the program shall be installed. Then click "Next".

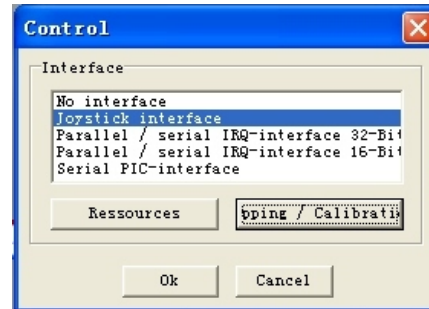
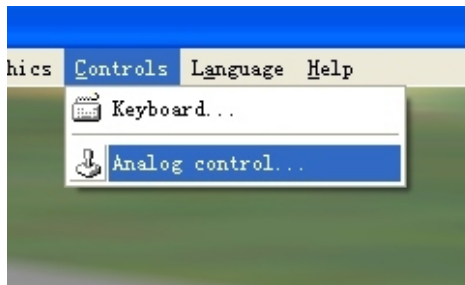


5. It will take several seconds for the installation. After ready you can start the program.

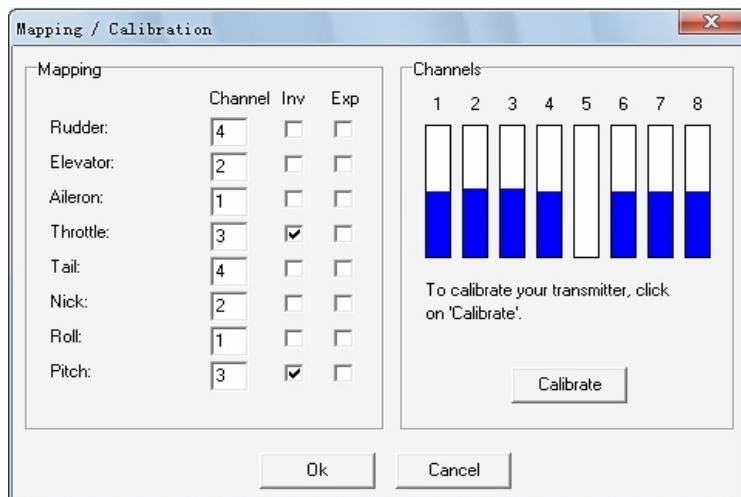


Setup of the simulator

1. Connect the simulator's usb-plug with the USB-port of your pc, then start the FMS software.
2. Click on "Controls" in the menu and choose "Analog control...". Select "Joystick Interface", then click on "Mapping/Calibration" button.



3. Start the calibration and follow the instructions on the screen. Mind the trim-controllers standing in the middle.

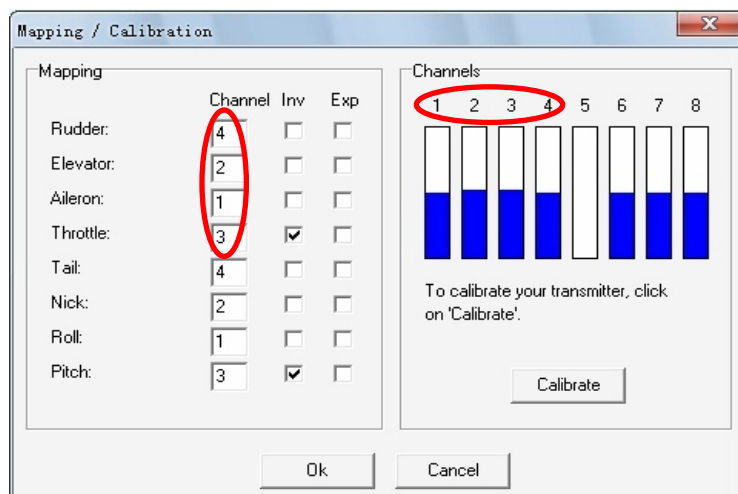


4. In the window "Mapping/Calibration" you can adjust with channel controls what function of your model.

You can play airplane and helicopter in your pc with this simulator. But you should config the channel right first.

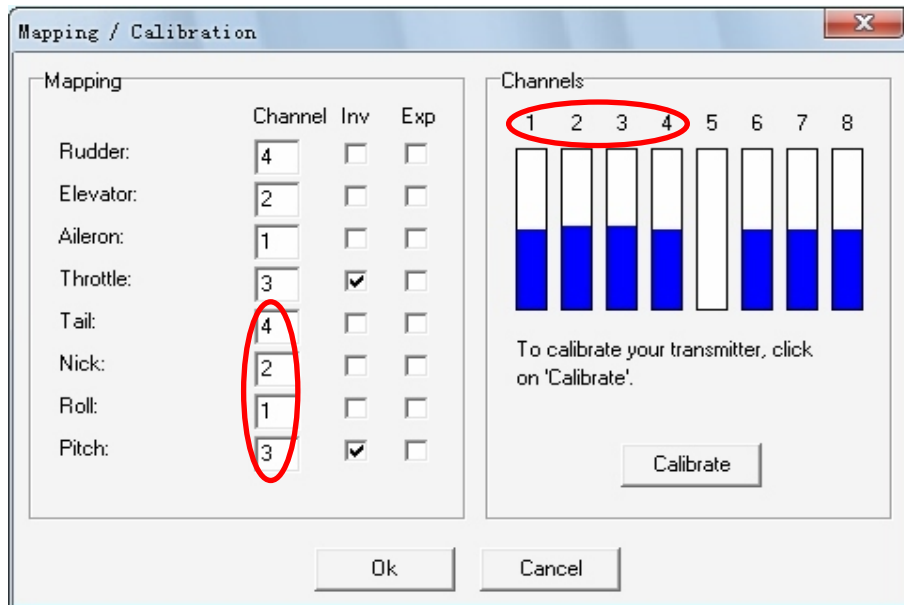
Airplane

You should use **Rudder/Elevator/Aileron/Throttle** channel to control airplane. And you should adjust the channel's number with your simulator.



Helicopter

You should use **Tail/Nick/Roll/Pitch** channel to control helicopter. So you should adjust the channel's number right with your simulator.



The FMS Flight Simulator Is Now Working with Windows Vista

Good news! You're now able to run the FMS RC flight model simulator on Windows Vista!

Users of the excellent Flying Model Simulator are reporting having trouble getting it to work properly on Windows Vista. After installing and trying to run FMS, users are generally presented with an error box stating: "D3DRM.DLL cannot be loaded". Basically, this is telling you that Windows is missing a library, and needs it to display the graphics. **Fortunately, there is a library available that fixes this problem.** In this article, I will show you how to install this on Windows Vista, so that FMS will work.



1. First, reinstall the FMS flight simulator program. A self extracting installation wizard is available on the page, at http://n.ethz.ch/student/mmoeller/fms/index_e.html Download the latest version, titled **Version 2.0 Beta 7 (Windows 9x/ME/2000) - recommended Version**
2. After installing, you will need to install the missing library D3DRM.DLL in your Windows Vista System32 folder. Please be careful to follow these instructions exactly, you could damage your system by accidentally deleting files in this folder. Here is the installation procedure, be sure to follow it exactly.
 - A. Go to <http://www.driverskit.net/dll/get/494.html> and enter the code that you see at the bottom of the page.
 - B. Press the download button, and save the ZIP file to your computer.
 - C. Extract the file D3DRM.DLL
 - D. Move the file D3DRM.DLL into the folder C:\Windows\System32
3. Restart the FMS application, and it should now work perfectly.

Download FMS software:

www.dynam-rc.com/information/download.htm
